



COLORGATE PRINTING SOFTWARE
RELEASE NOTES V25 BUILD 18048
May 6th, 2025



THE CORE OF PRINTING
Version 25

Contents

1	Introduction	3
2	New Drivers	5
2.1	Printer Drivers	5
3	Improvements and Bugfixes.....	6
3.1	NEW Improved Handling of Multipage PDF Files	6
3.2	General Improvements and Bugfixes	9
3.3	Adobe® PDF Print Engine	13
3.4	Color Atlas Module	13
3.5	Container	13
3.6	Cost Calculation Module.....	14
3.7	Filmgate / Film and Plate Module	14
3.8	Media Device Synchronization	14
3.9	Print and Cut Module	14
3.10	Profiler Module / Linearization Assistant	16
3.11	Proof Standard Digital Module / Quality Assurance Module	16
3.12	REST API Module	18
3.13	Printer related.....	19

1 Introduction

This document describes the changes and improvements since Productionserver 24.02 Build 17121. The upgrade to version 25 contains new features, significant improvements, and enhancements of existing modules and features, as well as bugfixes.

In addition to applications for Commercial Printing, this document also includes some innovations for Industrial Productionserver products.

For each modification it is stated if it is an improvement of an existing module/feature, or a bugfix:

NEW: an innovation/improvement of an already existing feature

BUGFIX: a bugfix

Note: All customers who had a valid Value Pack on effective date April 28th 2025 can upgrade to version 25 free of charge.

Find out how to upgrade your software [here](#) on our website.

Please also note that as of version 22, Microsoft Windows 8.1 and Microsoft Windows Server 2012 are no longer supported.

More information

Further information about version 25 can also be found on the website: www.colorgate.com

If you wish to get information about improvements and bugfixes of previous versions, you can find the corresponding Release Notes in our Service & Support area (please note that you have to be registered and logged in as a user to access them):

<https://www.colorgate.com/support/en/download>

Highlights of Version 25

- **Improved Handling of Multipage PDF Files**

Multipage PDF files - even with different page sizes - can now be handled and organized even better. Several new options allow you to split PDFs into individual jobs based on the number of pages or on the page size and thus process files with different page sizes directly in the ColorGATE software. If desired, the individual jobs can then be processed simultaneously, so that the process speed can be increased. A new option also makes it easy to print the split jobs in a container in a structured and medium-saving way.

This process can be largely automated using pre-settings in the hotfolder, allowing your production workflow to be designed efficiently and optimally.

- **Simplified Proofing: Report Printing with the latest DYMO® LabelWriter and automated Report Printing for Epson Printers with integrated Measuring Device**

Color control reports and proof evaluation reports can now also be printed on labels with the latest generation of the DYMO® LabelWriter™ (550) in order to attach them to a printout, making proofing even easier and more structured.

In addition, for Epson printers with integrated Epson Spectro Proofer ILS-30, color control reports and proof evaluation reports can now be created completely automatically and printed together with the control wedge under the corresponding job. No manual intervention is required, so that the workflow in this area is completely automated, saving time and resources.

- **Adobe® PDF Print Engine Version 6.4**

The Adobe PDF Print Engine is now available in version 6.4, and thus ensures compatibility with PDF files, e.g. from the latest Adobe products.

- **CrossXColor Library Version 1.22**

The CrossXColor Library has been updated to version 1.22, resulting in better compatibility, performance and color output.

- **Screen Printing Support by further Printer Drivers**

Following drivers now support screen printing via Filmgate and the Film and Plate Module:

Epson SureColor SC-T37X0 Series, Epson SureColor SC-T57X0 Series and Epson SureColor SC-T77X0 Series. MIMs and further documentation will be released soon.




- **New Product Family: Core Productionserver**

With its well-balanced features and easy-to-understand components, the new product family ensures that you can quickly find the perfect solution for your workflow. You can choose between Core Productionserver S, M and L and supplement these with additional function packages - so that you can easily meet your specific requirements and find the right tools for your production.

Detailed information on these highlights and on all other improvements can be found in the following chapters.

2 New Drivers

2.1 Printer Drivers

Manufacturer	Device name	 PS	 PG	 FG
Epson	Epson SureColor SC-P205X0 Series	Cat 1	L	
Roland	Roland TY-300	Cat 1		
SuZhou Jetland	Jetland MP 100 Jetland SP 100	Cat 1 Cat 1		
swissQprint	swissQprint Impala 5 swissQprint Nyala 5	Cat 3 Cat 3		

Complete driver list on our [website](#). Please note that drivers for Industrial Printing are not listed here.

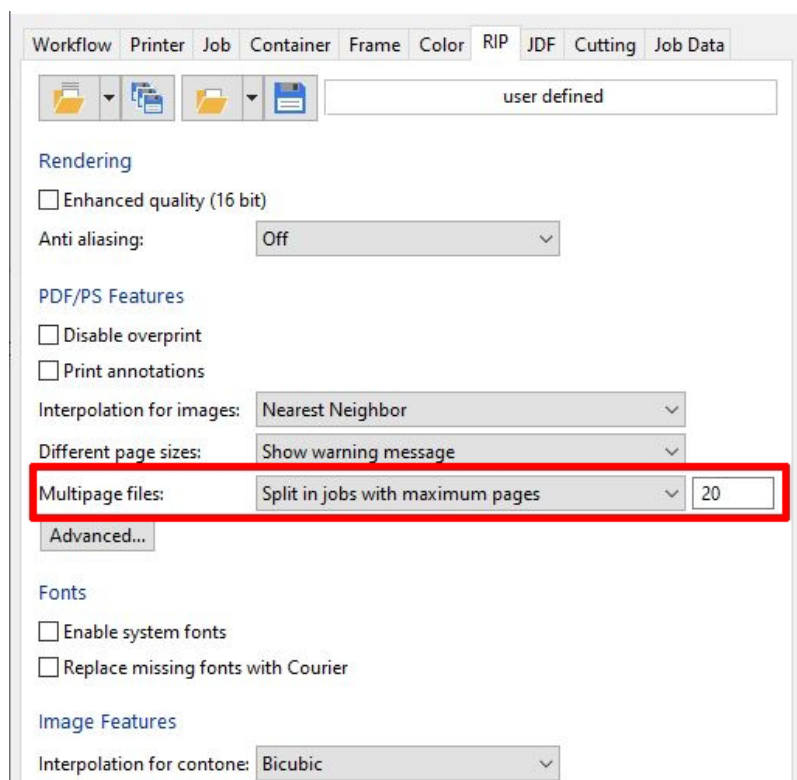
3 Improvements and Bugfixes

3.1 **NEW** Improved Handling of Multipage PDF Files

Multipage PDF files - even with different page sizes - can now be handled and organized even better. Several new options allow you to split PDFs into individual jobs based on the number of pages or on the page size, thus optimizing your production workflow.

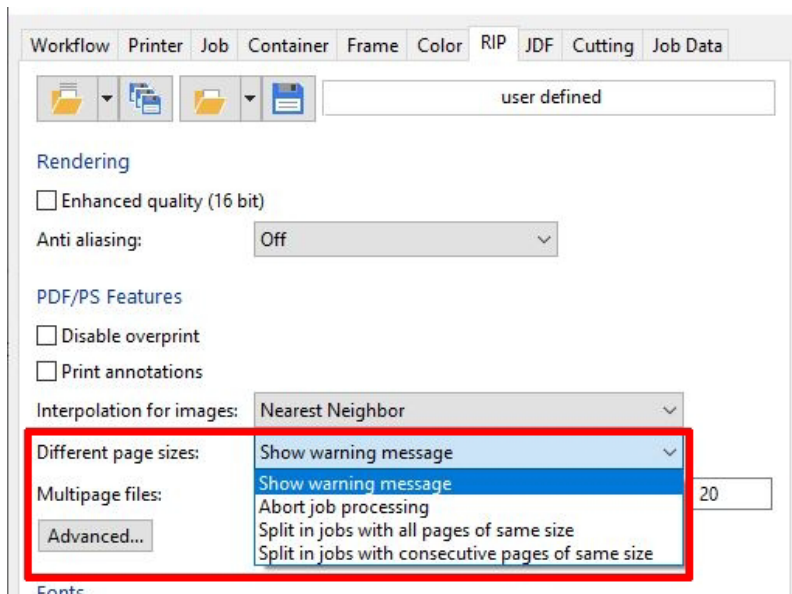
In the hotfolder settings, there are several new options for processing multipage PDF files that are automatically applied to newly loaded PDFs:

Firstly, you can specify here on the “RIP” tab that multipage PDFs should be split into individual jobs with a maximum number of pages, whereby the upper page limit is freely definable.



This has the advantage, particularly for very large files (or for those with a very large number of pages), that they can be split into several smaller jobs and processed in parallel, which can increase the process speed.

Secondly, you can define here how PDF files containing different page sizes should be handled. In addition to the existing options - displaying a warning message for different page sizes and canceling job processing - the PDF can now also be split into individual jobs with pages of the same size:

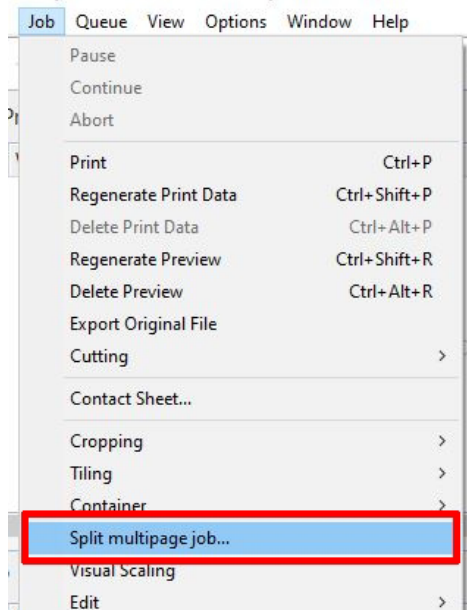


“Split in jobs with all pages of same size” creates a job with all existing pages of the same size, regardless of whether they are in direct succession in the original document or not. The advantage of this is that the individual jobs no longer contain different page sizes, but possibly the original page sequence is no longer given.

Status	WF	Job	Size	Copies	File Size	MIM
		Food V1.0.1 - 10.pdf	210 x 210	1	399,65 MB	None
		Food_V1_0_1__10_SplitPages_1-8,11-18,21-28,31-38,41-48,51-58,61-68,71-78,81-88,...	210 x 210	1	399,65 MB	None
		Food_V1_0_1__10_SplitPages_9-10,19-20,29-30,39-40,49-50,59-60,69-70,79-80,89-90...	114 x 159	1	399,65 MB	None

If “Split in jobs with consecutive pages of same size” is selected, individual jobs are only created with consecutive pages of the same size. This means that if a page of a different size follows in the original file, a separate job is created for this. This may result in a larger number of individual jobs, but the pages remain in the same order as in the original document.

Status	WF	Job	Size	Copies	File Size	MIM
		Food V1.0.1 - 10.pdf	210 x 210	1	399,65 MB	None
		Food_V1_0_1__10_SplitPages_1-8	210 x 210	1	399,65 MB	None
		Food_V1_0_1__10_SplitPages_9-10	114 x 159	1	399,65 MB	None
		Food_V1_0_1__10_SplitPages_11-18	210 x 210	1	399,65 MB	None
		Food_V1_0_1__10_SplitPages_19-20	114 x 159	1	399,65 MB	None
		Food_V1_0_1__10_SplitPages_21-28	210 x 210	1	399,65 MB	None



The same options can also be found in the “Job” menu and can therefore also be applied to jobs that have already been loaded.

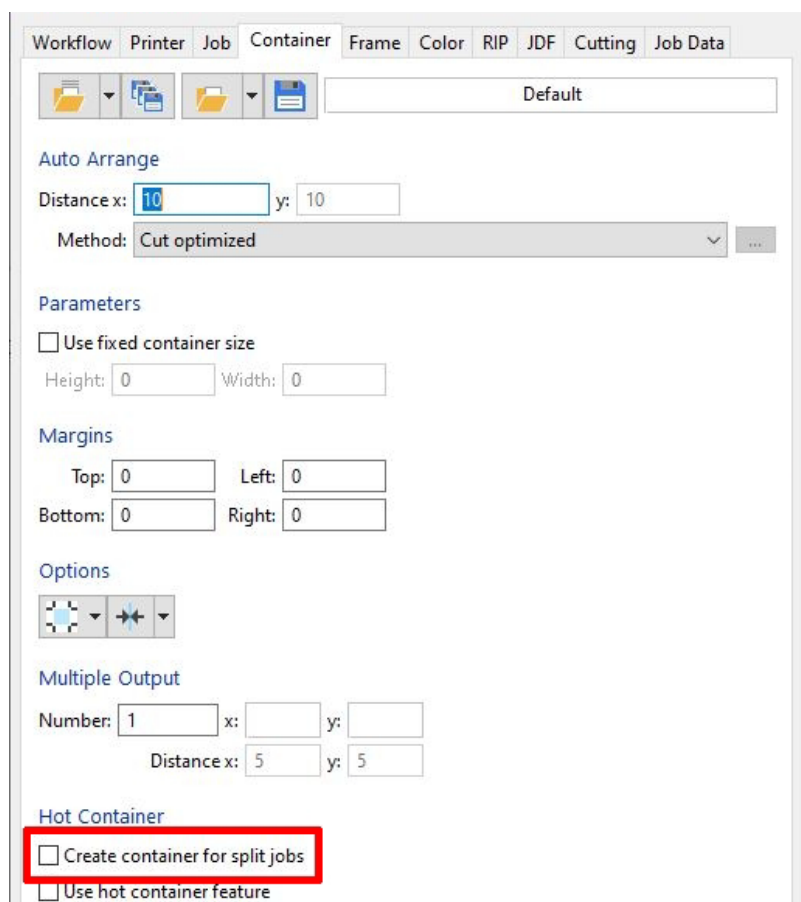
And of course, these options can also be combined with each other, so that a PDF file can be split into individual jobs with pages of the same size AND with a maximum number of pages.

To ensure that split jobs are either output in the existing order or in a media-saving manner, there is also the new option “Create container for split jobs” on the “Container” tab in the hotfolder settings.

This automatically combines and prints all related jobs in one container.

These new options for processing multipage PDF files therefore offer you numerous individual options for optimally organizing and - also automatically - printing your PDF files directly in the ColorGATE software, even with different page sizes.

By splitting very large PDF files into several jobs, the print data can also be created more quickly through parallel job processing, making the production workflow significantly more time-efficient.



3.2 General Improvements and Bugfixes

- **NEW** To simplify the installation of the ColorGATE software and to avoid potential errors, the installer now checks before starting the update process whether the program is currently executing and displays a corresponding warning message if necessary.
- **BUGFIX** Since version 24 it was not possible to print a link created from a job.
- **BUGFIX** The items "Creation Date/Time" and "Backup Date/Time" have been removed from the selection list for the job info text as they were not required there.
- **BUGFIX** When trying to import a file into a printer definition, an error message sometimes appeared.
- **BUGFIX** If the options "Print vertical idents" and "Single bar for horizontal mark" were enabled for Fotoba XLA cut marks, these were positioned outside the print area.
- **BUGFIX** Since version 24, the activated option "Fill last row of copies" for multiple output of multipage files resulted in a separate row being created for each page.
- **BUGFIX** If "Page Number" was selected for the destination path in the "Edit Path Settings" dialog, the "Print Page Number" was used for the output file name instead.
- **BUGFIX** For multicopy and multipage jobs, the information for "Print Page Number" in the job info was incorrect.
- **BUGFIX** When importing CSEX settings, an incorrect warning message was shown.

Color Management:

- **NEW** The CrossXColor Library has been updated to V1.22, resulting in better compatibility, performance and color output.
- **NEW** Control wedges are now also available for print modes with a combination of light and extension colors, i.e: CMYKRO, CMYKLCLMLKRO, CMYKLRBO, CMYKRG, CMYKLKRG, CMYKG, CMYKRV, CMYKLCLMRO, CMYKGB, CMYKOG, CMYKLCLMLYLKMK, CMYKRGB, CMYKLKRGB, CMYKLKOGV, and CMYKLCLMOGV.
- **NEW** A new control wedge target is available for Barbieri Spectro Swing and Barbieri Spectro Swing qb.
- **BUGFIX** In certain cases, no embedded profile for individual elements was displayed in the information of a PDF file.
- **BUGFIX** When processing spot colors in PDF files for which no replacement was defined, artifacts could occur.

- **BUGFIX** If a control wedge was used and the color mode was changed, the control wedge was not automatically updated.

Color Replacement:

- **BUGFIX** If a PDF file with DeviceN spot colors was analyzed, the Lab color was not detected correctly.
- **BUGFIX** For spot colors with Lab replacement, the color separation did not comply to the output profile.

Cropping:

- **BUGFIX** In a multipage PDF file, it was not possible to change the cropping settings if a page other than the first page was selected.

File Handling:

- **BUGFIX** If only one page was selected for multipage PDF files, eyelet marks were only printed when this was the first page.
- **BUGFIX** Stroke commands in PDF files were calculated differently than in Adobe Acrobat® or Adobe Illustrator®. Under certain circumstances, this led to a different output of for example miter corners.
- **BUGFIX** When the Ink Saver was used and "Global Rasterization" was selected for transparency flattening (job settings > "RIP" tab > "Advanced..." > "Flattener") there could be artifacts on PDF files since version 23.11.

Licensing:

- **NEW** From version 25, there is a new product family: Core Productionserver. This replaces the former Flexline Editions, Productionserver Light and the Manufacturer Editions and, with its balanced functions and easy-to-understand components, ensures that you can quickly find the perfect solution for your workflow:
Core Productionserver S is ideal for customers looking for a simple, reliable and cost-effective introduction to high-quality digital printing.
Core Productionserver M is tailored for companies with more machines and a greater need for workflow options and control.
Core Productionserver L, the most powerful edition, offers the perfect support for print service providers with highly efficient production and high throughput.

These three product lines are complemented by optional packages for specific production requirements: Profiler Suite, Simulation & Proofing Package and Screen Package. This allows you to customize your Productionserver to your individual processes.

You can find detailed information on Core Productionserver on our website at
<https://www.colorgate.com/products/software/core-productionserver/>

Please note that Value Pack customers will continue to upgrade to their current product (e.g. Productionserver Pro).

- **NEW** For licenses with Soft Key and with a valid Value Pack, it is now generally possible to change device drivers yourself on the ColorGATE Service & Support Site under “Account & Licenses” - without having to contact our Customer Service Team. This means that necessary driver changes can be made at any time and at very short notice.

The screenshot displays the 'Licenses' management interface. On the left, under 'Your licenses', there is a search bar and a list of licenses. On the right, the 'License details' panel is shown. It includes buttons for 'Release license' and 'Change license usage mode'. The details are organized into sections: **LICENSE** (Number, Type: License with Soft Key, Activation code, Usage mode: online, Binding status), **PRODUCT:** (PS24 Select (SHL)), **E-MAIL ADDRESSES:**, **LIMITS:** (Limited until: 29.12.2025), **SUPPORT OPTION:** (Name: Value Pack 1, Expiration date: 29.11.2025, Terms and Conditions: accepted), **OUTPUT MANAGEMENT:** (5x Hotfolder, 1x RIP Process, 1x PS-Cat1-OMS), and **PRINTERS:** (HP Latex 700, Number of instances: 1). A red box highlights the 'CHANGE DEVICE DRIVERS...' button under the 'PRINTERS' section.

Please note that you can only change drivers yourself within the licensed driver category and that the license must be in online license usage mode.

Multilayer Printing:

- **BUGFIX** Even if the “Mirror top job” or “Mirror bottom job” option was activated when creating a multilayer job, the corresponding job was not mirrored in certain cases.

Preview:

- **BUGFIX** In version 24, a preview was displayed after the creation of a container, even if the preview function was not activated.
- **BUGFIX** For multicopy hot containers, the preview displayed only one copy of the container.
- **BUGFIX** The color information in the advanced preview showed incorrect values for rotated or mirrored jobs since version 24.
- **BUGFIX** Under certain circumstances, the correct output length was not displayed in the preview toolbar for multiple copy jobs and containers.

Special Colors:

- **BUGFIX** When using 16bit output under certain circumstances, image objects in PDF files could show artifacts when printing on devices with special color separations since version 24.

User Interface:

- **NEW** For the "Graded Edges" option on the "Print Mode" tab of the advanced job settings (available for certain DTG systems), there is now a tooltip that shows which values can be entered there.

Special Colors

White: Brightness Limit: 100 Spread(+)/Choke(-): 0
 Minimum: 0 Intensity: 100

White2 (Highlight): Off

Graded Edges: 0
 Please enter values in the range 0 - 20 pixels.

3.3 Adobe® PDF Print Engine



Information about this function on the [website](#).

- **NEW** The Adobe PDF Print Engine has been updated to version 6.4.

3.4 Color Atlas Module



Information about this module on the [website](#).

- **BUGFIX** When printing a color atlas target, since version 24.02 the program crashed if a print mode with several special colors was used in which all but the first color could be mixed with process colors.

3.5 Container



Information about this function on the [website](#).

- **NEW** The default method for "Auto Arrange" has been changed from "Cut optimized" to "Media optimized".
- **BUGFIX** For multiple copy containers, eyelet marks were only printed on the first copy.
- **BUGFIX** If the "Rotate" option was set to "Auto" for jobs in a container, they were cut off if a change of the media width for the container resulted in a change of the orientation of the jobs.
- **BUGFIX** Under certain circumstances, the individual jobs were cropped after a container was split.
- **BUGFIX** Since version 24, jobs were shown unproportionally scaled in the container preview if the option "Disable Auto-Tiling" was activated. However, the output was as expected (the parts of the job that were larger than the media were not printed).
- **BUGFIX** When creating a cut-optimized container, the full width of the medium has not been used since version 24.

3.6 Cost Calculation Module

Information about this module on the [website](#).



- **BUGFIX** For tiled jobs, since version 24 ink costs were only calculated and displayed in the cost report for the first tile of the job.

Acuity Prime 20 / 30 / Hybrid / L:

- **BUGFIX** The cost calculation for these drivers now takes into account that special colors are printed with two rows of nozzles.

3.7 Filmgate / Film and Plate Module

Information about this module on the [website](#).



- **NEW** Screen drivers and support for Filmgate and the Film and Plate Module are now available by the following printer drivers: Epson SureColor SC-T37X0 Series, Epson SureColor SC-T57X0 Series and Epson SureColor SC-T77X0 Series. MIMs and further documentation will be released soon.

3.8 Media Device Synchronization

Information about this module on the [website](#).



- **BUGFIX** Since version 24.02, ripping MDS targets caused an error when using the color mode CMYKLcLmLkRO.

3.9 Print and Cut Module

Information about this module on the [website](#).



- **BUGFIX** It was not possible to cut jobs with very long file names.

- **BUGFIX** In individual cases, there was no cut path when creating the cut data in a container.
- **BUGFIX** If there were several cut path names configured in a hotfolder and then a file with only one cut path was defined, multiple cut paths were created (separately for each cut) in version 24.
- **BUGFIX** In version 24, the cut path for the trimbox was created incorrectly for tiled jobs and when using the "Split Tiles Into jobs" function.
- **BUGFIX** Under certain circumstances, the cut path was rotated unlike the print data.

ColorGATE CutServer:

- **BUGFIX** Since version 24, no print date and no print time were shown for files that had already been printed. Instead, "not printed" was displayed.
- **BUGFIX** When the option "Disable Auto-Tiling" was activated, the preview for the cut path in the CutServer was incorrect.
- **BUGFIX** The cut path in the preview for a container was shifted.

IECHO-SK:

- **BUGFIX** When using the Bezier conversion method "Convert Beziers To Arcs", there were gaps in the cut path.

Secabo DTF MultiCut Pro:

- **BUGFIX** The default size of the QR code has been set to 15mm.
- **BUGFIX** Only integer numbers are output in commands in the PLT file.

Summa (S/S2 Class, SummaSign, SummaCut):

- **BUGFIX** If Fotoba cut marks and synchronization marks for Summa S were printed at the same time, both the position of the synchronization marks and the width and height of the output were incorrect.

3.10 Profiler Module / Linearization Assistant



Information about the Profiler Module [here](#) on the web-site.

Information about the Linearization Assistant [here](#).

- **BUGFIX** The droplet separation curves were not saved in the CCX file if only large droplets were used.

Konica Minolta FD-9 / MYIRO-9:

- **BUGFIX** In the linearization and profiling assistant, no correct G7 targets were offered for these measuring devices.

3.11 Proof Standard Digital Module / Quality Assurance Module



Information about the Proof Standard Digital Module [here](#) on the website.

Information about the Quality Assurance Module [here](#).

- **NEW** The software has been updated so that color control reports and proof evaluation reports can now also be printed on labels with the current generation of the DYMO® LabelWriter™ (550) in order to subsequently attach them to a printout.
 For this purpose, there are the new options “Color Control Report (54x101mm Label)” for color control reports as well as “Proof Evaluation Report detailed (54x101mm Label)” and “Proof Evaluation Report short (54x101mm Label)” for a long and short version of the proof evaluation report in the “Control Wedge Evaluation” dialog under “Reporting”.

Control Wedge Evaluation: Lighthouse_A1.jpg

Measurement Device
Barbieri Spectro Swing
Start Settings

Begin the measurement with 'Start'.

Control Wedge
Color Control Wedge 1.0
Reference Values:
PS_Ri1000_White-Garment_CMYK_Fine_600x600_8P.icc
Color Control Wedge Version 1.0 © by ColorGATE GmbH, Hanover, 2011

A1 A2 A3 A4 A5 A6 A7 A8 A9 A10 A11
A12 A13 A14 A15 A16 A17 A18 A19 A20 A21 A22
B1 B2 B3 B4 B5 B6 B7 B8 B9 B10 B11

Results

	Value	Custom
Average		2,5
Maximum		5,0
Primaries		3,0

DeltaE calculation: DeltaE2000 Reset

Media Device Synchronization
Start MDS

Reporting
Color Control Report (54x101mm Label)
Color Control Report detailed (A4)
Color Control Report short (A4)

Additional Info
Printer: Ricoh Ri 1000
Media: DTF_Ri_1000_White-Garment
Ink: Ri1000_typeG1
Metamode: Fine 600x600dpi 8Pass
Output profile: PS_Ri1000_White-Garment_CMYK_Fine_600x600_8P.icc
Job: Lighthouse_A1.jpg
Printed: 01.01.2000 Measured: Backing: White
Customer:
Comment:

Close

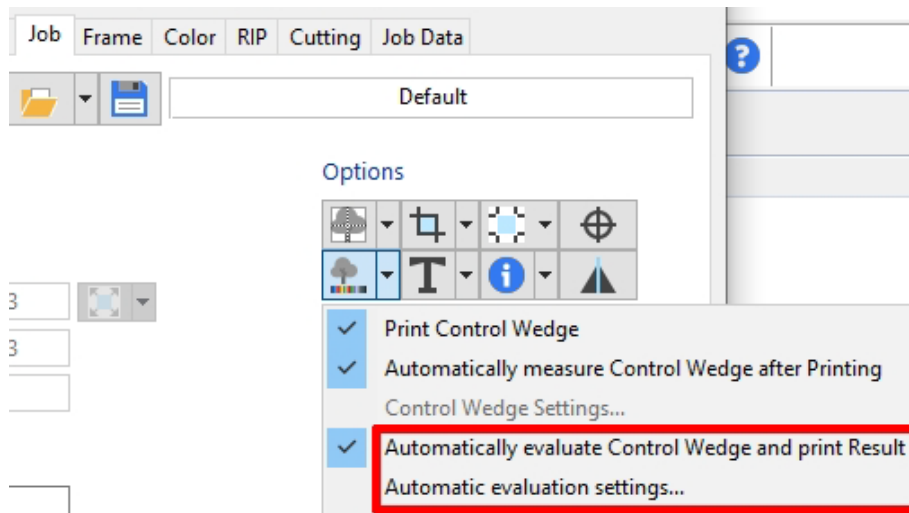
Reporting

Proof Evaluation Report detailed (A4)
Proof Evaluation Report detailed (54x101mm Label)
Proof Evaluation Report detailed (A4)
Proof Evaluation Report short (54x101mm Label)
Proof Evaluation Report short (A4)

- BUGFIX** Color control reports used the wrong charset settings so that some data was displayed incorrectly.

Epson printers with embedded Epson Spectro Prower ILS-30 (Epson SureColor SC-P70x0 Series / Epson SureColor SC-P75x0 Series / Epson SureColor SC-P90x0 Series / Epson SureColor SC-P95x0 Series):

- NEW** Color control reports and proof evaluation reports can now be created completely automatically and printed together with the control wedge under the corresponding job.



For this purpose, there is the new option “Automatically evaluate Control Wedge and print Result” which, when activated, automatically measures and prints the control wedge: When the control wedge is sent to the printer, it is printed and - after an appropriate drying time - measured. The report is then created, sent to the printer and printed out together with the control wedge and the job. Depending on the settings, the control wedge may also be cut off.

No manual intervention is required for any of these steps, meaning that the production workflow in this area is completely automated, saving time and resources.

The settings for the control wedge and report can be made in advance using the new “Automatic Evaluation Settings...” option and can therefore be defined individually.

These new functions are available for individual jobs in the jobs settings as well as for hotfolders, so that it is possible to extend the automation even further and carry out this process for all jobs loaded via the hotfolder.

3.12 REST API Module

Information about this module on the [website](#).



- **NEW** It is possible now to set custom limits for the control wedge evaluation via the REST API.

3.13 Printer related

AGFA Jeti Mira LED MG2732 HS:

- **BUGFIX** The print modes have been updated.

Brother WF1-L640:

- **NEW** When many printers were driven by one Productionserver and the Printer Status Monitor was used, various problems could occur.

Canon Colorado 1630 / 1640 / 1650 / M-Series:

- **BUGFIX** If Fotoba marks were selected as cut marks and these were to be printed on the right side, the output width was greater than the material width.
- **BUGFIX** Since version 24, the “Printed” column in the job archive sometimes did not correctly show whether a job had already been printed or not.

ColorGATE PDF FLAT HIGH-RES / PDF FLAT LOW-RES:

- **BUGFIX** PDF files created with these drivers sometimes had a white line at the edge of the print files.

Epson SureColor SC-P11000D / SC-P6500 / SC-P8500 / SC-T3700 / SC-T5700 / SC-T7700:

- **BUGFIX** An incorrect media length was displayed in the Printer Status Monitor.

Epson printers with embedded Epson Spectro Proofer ILS-30 (Epson SureColor SC-P50x0 Series / Epson SureColor SC-P70x0 Series / Epson SureColor SC-P75x0 Series / Epson SureColor SC-P90x0 Series / Epson SureColor SC-P95x0 Series):

- **NEW** Color control reports and proof evaluation reports can now be created completely automatically and printed together with the control wedge under the corresponding job (for more information, please see chapter 3.11).

Epson SureColor SC-R50x0 Series / SC-R50x0L Series:

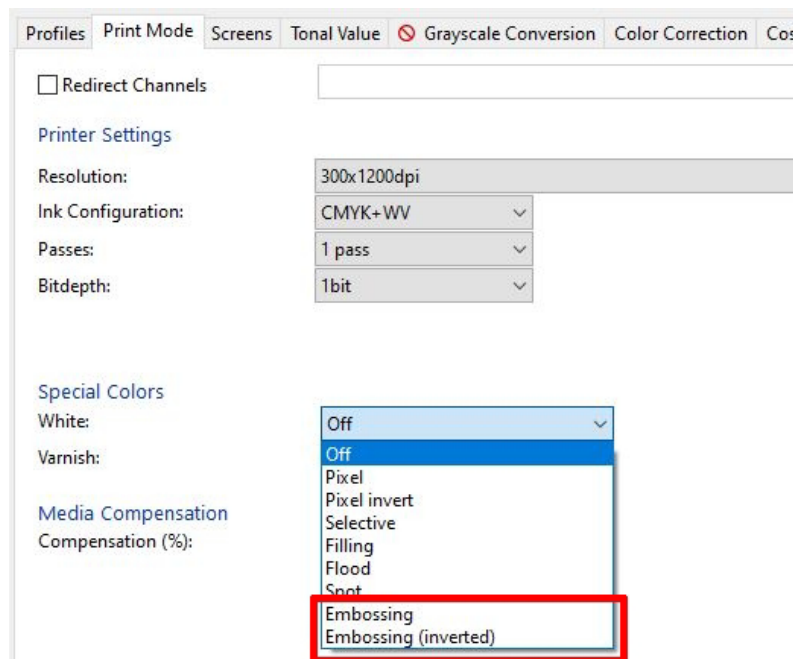
- **BUGFIX** It was not possible to deactivate bidirectional printing.

Epson SureColor SC-T37X0 Series / SC-T57X0 Series / SC-T77X0 Series:

- **NEW** The drivers now support screen printing via Filmgate and the Film and Plate Module. MIMs and further documentation will be released soon.

GuangZhou ChunYuQiuFeng CF-JD-YZ2510JJ:

- **NEW** For special colors, the options “Embossing” and “Embossing (inverted)” are now available.



MS (all printer drivers):

- **NEW** Sending data via network to this device was optimized so that the printing speed is now significantly higher.

Roland AP-640 / Roland CO-300-B200 / Roland CO-300-F200 / Roland CO-640-B200 / Roland CO-640-F200 / Roland CO-640-F300 / Roland CO-640-F400 / Roland LEC2-330 / Roland LEC2-330S-B200 / Roland LEC2-330S-F200 / Roland LEC2-640 / Roland LEC2-640S-B200 / Roland LEC2-640S-F200 / Roland LEC2-640S-F300 / Roland LEC2-640S-F400 / Roland LG-300 / Roland LG-540 / Roland MG-300 / Roland MG-640 / Roland UG-641 / Roland UG-642:

- **NEW** When many printers were driven by one Productionserver and the Printer Status Monitor was used, various problems could occur.

Roland LG-640:

- **NEW** When many printers were driven by one Productionserver and the Printer Status Monitor was used, various problems could occur.
- **BUGFIX** Print mode and color mode were not updated correctly after selecting a MIM.

Roland XP-640:

- **NEW** When many printers were driven by one Productionserver and the Printer Status Monitor was used, various problems could occur.
- **BUGFIX** The ink levels were not displayed correctly in the Printer Status Monitor.

swissQprint (all printer drivers):

- **CHANGE** All drivers now contain the manufacturer's name in the driver's name, e.g. "Impala" is now called "swissQprint Impala".

A list of all printer drivers supported by ColorGATE can be found on our [website](#).