



ColorGATE

INNOVATIVE SOLUTIONS
COMMITTED TO COLOR

COLORGATE PRINTING SOFTWARE RELEASE NOTES V23.10 BUILD 16034

November 20th, 2023

Precision meets
Automation



Contents

| | | |
|------|--|----|
| 1 | Introduction | 3 |
| 2 | New Drivers | 4 |
| 2.1 | Printer Drivers | 4 |
| 2.2 | Cutting Device Drivers | 5 |
| 3 | Improvements and Bugfixes..... | 6 |
| 3.1 | NEW FEATURE Setup Assistant..... | 6 |
| 3.2 | NEW Print Job Info as QR Code..... | 7 |
| 3.3 | General Improvements and Bugfixes | 8 |
| 3.4 | Adobe® PDF Print Engine | 13 |
| 3.5 | Color Atlas Module | 13 |
| 3.6 | Color Correction Loop Module | 14 |
| 3.7 | Computer to Screen Module | 14 |
| 3.8 | Container | 14 |
| 3.9 | Cost Calculation Module..... | 15 |
| 3.10 | Filmgate / Film and Plate Module | 15 |
| 3.11 | Fingerprint Module | 16 |
| 3.12 | JDF Interface Module | 16 |
| 3.13 | Job Backup Module..... | 16 |
| 3.14 | Print and Cut Module | 17 |
| 3.15 | Profiler Module / Linearization Assistant..... | 19 |
| 3.16 | REST API Module..... | 20 |
| 3.17 | TVI Calibration Module | 22 |
| 3.18 | Printer related..... | 23 |

1 Introduction

This document describes the changes and improvements since Productionserver 23.01 Build 15094. The update to version 23.10 contains new features, improvements and enhancements of existing modules and features, as well as bugfixes.

In addition to applications for Commercial Printing, this document also includes some innovations for Industrial Productionserver products.

For each modification it is stated if it is a new feature, an improvement of an existing module/feature or a bugfix:

NEW FEATURE: a new feature

NEW: an innovation/improvement of an already existing feature

BUGFIX: a bugfix

Note: All customers who had a valid Value Pack on effective date November 08th 2023 can update to version 23.10 free of charge.

Please note that if you upgrade from version 22 or earlier, you must contact our Customer Service Team via cs@colorgate.com to upgrade your license before you will be able to run the new version.

Please also note that as of version 22, Microsoft Windows 8.1 and Microsoft Windows Server 2012 are no longer supported.

More information




Further information about version 23.10 can also be found on the website: www.colorgate.com

If you wish to get information about improvements and bugfixes of previous versions, you can find the corresponding Release Notes in our Service & Support area (please note that you have to be registered and logged in as a user to access them):

<https://www.colorgate.com/support/en/download>

2 New Drivers

2.1 Printer Drivers

| Manufacturer | Device name |  |  |  |
|----------------------------|--|--|---|---|
| Canon | Canon Colorado M-Series Canon iPF GP-2000 Canon iPF GP-4000 Canon iPF GP-520 Canon iPF GP-540 | Cat 2 Cat 1 Cat 1 Cat 1 Cat 1 | | |
| FUJIFILM | Acuity Prime Hybrid | Cat 2 | | |
| GuangZhou ChunYuQiuFeng | CF-JD-PB1016 CF-JD-PB1810 CF-JD-PB2513 CF-JD-PB3220 CF-JD-SinglePass CF-JD-YZ2510JJ CF-RY-PB1016 CF-RY-PB1810 CF-RY-PB2513 CF-RY-PB3220 | Cat 1 Cat 1 Cat 1 Cat 1 Cat 1 Cat 1 Cat 1 Cat 1 Cat 1 Cat 1 | | |
| JSW | JSW QR3200K | Cat 2 | | |
| Kornit | Kornit Atlas MAX Plus | Cat 2 | | |
| Mimaki | Mimaki TxF150-75 Mimaki TxF300-75 | Cat 1 Cat 1 | | |
| Ricoh | Ricoh Ri 1000X Ricoh Ri 4000 | Cat 1 Cat 1 | | |

| | | | | |
|-----------|---|---|--|--|
| Roland | Roland LG-300 Roland LG-540 Roland LG-640 Roland MG-300 Roland MG-640 Roland UG-641 Roland UG-642 | Cat 2 Cat 2 Cat 2 Cat 2 Cat 2 Cat 1 Cat 1 | | |
| SignMaker | SignMaker Dominator 2630P6 SignMaker Dominator F121P6 | Cat 1 Cat 1 | | |

2.2 Cutting Device Drivers

| Manufacturer | Device name | Category |
|-----------------------------------|------------------|----------|
| Summa | Summa (S3 Class) | Cat 0 |
| Vivid Laminating Technologies Ltd | VeloBlade Nexus | Cat 1 |

Complete driver list on our [website](#). Please note that drivers for Industrial Printing are not listed here.

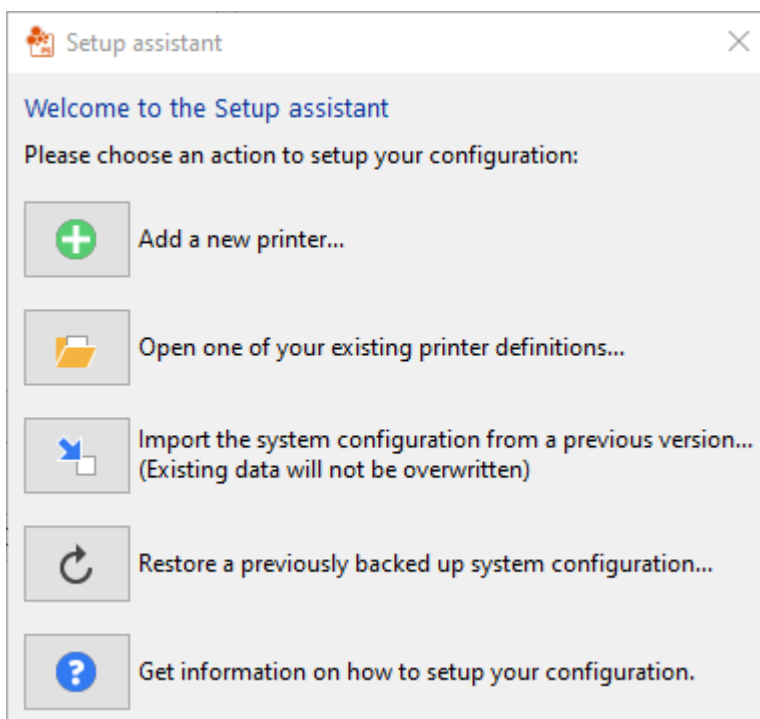
3 Improvements and Bugfixes

3.1 **NEW FEATURE** Setup Assistant

If the software is started and no printer is open - for example after a new installation - a setup assistant will now open automatically. This provides you at a glance with the most important steps for working with the ColorGATE software.

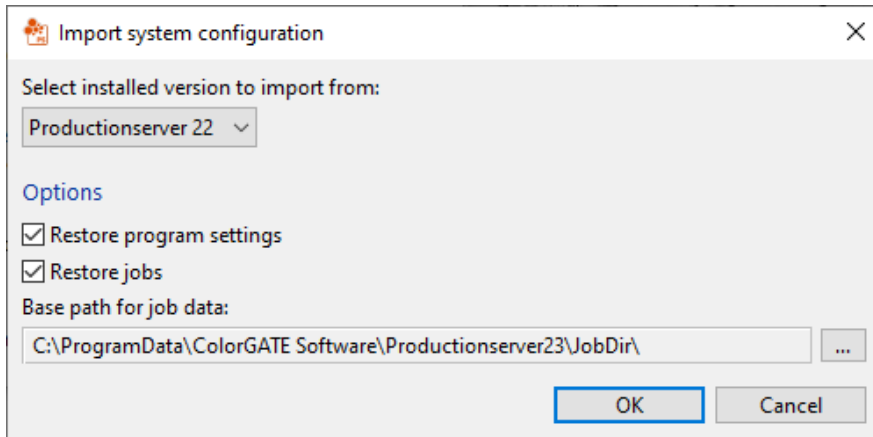
In this way, you can quickly and easily

- create a new printer
- open a printer that has already been created but is currently closed
- import the system configuration of a previous version into the current one
- restore a previously backed up system configuration
- go directly to more information about the setup assistant in the online help



The "Import the system configuration from a previous version" option allows you to transfer your former user-defined settings (including printer definitions, program settings, job data, profiles and linearizations) directly to the new version e.g., after updating the software - without the need to manually backup and then restore the system configuration.

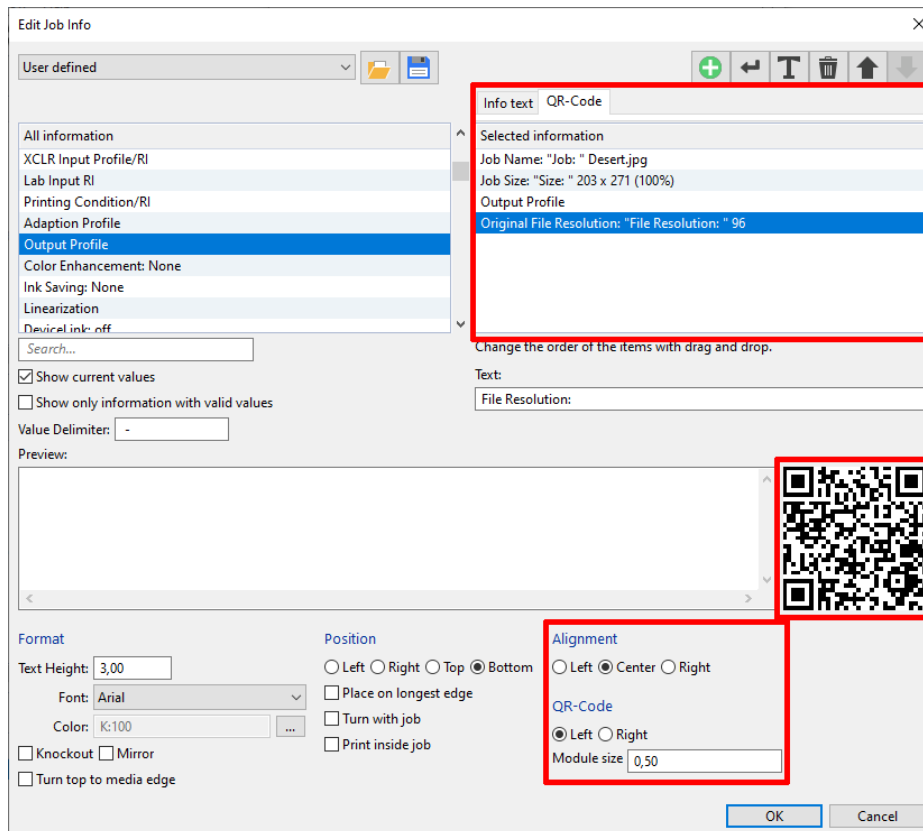
This guarantees a smooth and fast transition between different software versions.



If required, you can also call up the setup assistant manually at any time by clicking on "Help" > "Setup assistant...".

3.2 **NEW** Print Job Info as QR Code

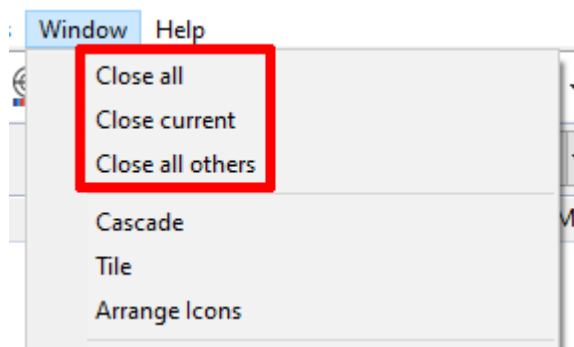
Job-related information can now be printed not only in text form, but also as a QR code together with the job. For this purpose, the "Edit Job Info" dialog (Job settings > "Job" tab > "Edit info...") has been extended to include an area for QR codes:



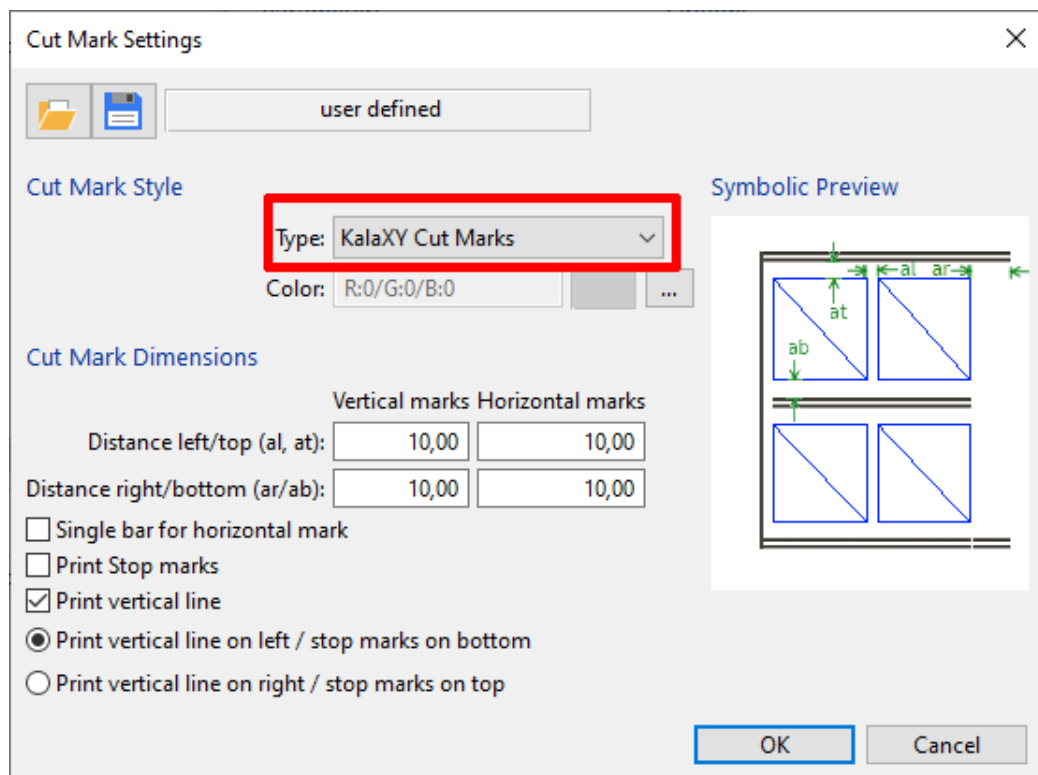
Here you can define which job-related information should be included in the QR code (e.g. the job name, the MIM used, the output profile, etc.), how the QR code should be aligned and what size the individual pixels of the code should have.

3.3 General Improvements and Bugfixes

- **NEW** A new MIM created from the MIM administration now contains the color settings from the first hotfolder.
- **NEW** If Windows crash dumps are generated when creating a Support Info File, they are now stored in the GCLogs folder and can be viewed by clicking "Help" > "Open log folder".
- **NEW** The "Window" menu has been extended and now offers three new options to
 - close all open printers
 - close the currently used printer
 - close all open printers other than the currently used one.
 This simplifies the work and operation of the software with a large number of printers.



- **NEW** The regular scan of all existing active hotfolders for changes has been optimized, so that the performance of the software has been improved as a result.
- **NEW** To support the Kala Kalaxy cutters, the cut marks "KalaXY" are now available and can be selected in the "Cut Mark Settings" dialog.



- **BUGFIX** Fotoba marks were sometimes printed on the wrong position. This mostly happened with jobs that included a larger container.
- **BUGFIX** Since version 23.01, it was not possible to create Windows crash dumps when creating a Support Info File.
- **BUGFIX** Corrupt job files caused a crash when starting the software or changing the archive path. Such files are now skipped, and a system log entry is created. If the REST server is running corrupt files are removed automatically.
- **BUGFIX** When creating a new linearization or profile, information about an already existing linearization/profile from the hotfolder was displayed in the "Edit Job Info" dialog.
- **BUGFIX** In version 23.01, the software crashed under certain circumstances when trying to import a MIM.
- **BUGFIX** If all settings for a job were loaded from a tab other than the "Job" tab, this may have resulted in a RIP error.
- **BUGFIX** In the Hotfolder settings, "user defined" was always displayed on the "Rip" tab. If "Scale 1:1" was enabled, "user defined" was also always displayed on the "Job" tab.

- **BUGFIX** Sometimes the software crashed after a color correction was done.
- **BUGFIX** If the option "Fit to page" is enabled for a job and this job is sent to another hotfolder, the size of the job is now updated.

Color Management:

- **NEW** To illustrate that the effect of the DeviceLink exception "Pure Black" is overlaid by "Black Overprint", its status is now synchronized. So, if "Black Overprint" is set or cleared, the same is done for "Pure Black".
In addition, the checkbox for "Pure Black" is disabled when "Black Overprint" is set to ensure that both options remain synchronized.
- **BUGFIX** In some cases, depending on the characteristics of the output profile, the pure colors options did not work as expected on multicolor output (e.g., 6CLR).
- **BUGFIX** The .eps-based targets IT874_EyeOnelsis_A4.ctx and IT874_EyeOnelsis_A3.ctx have been replaced by .pdf files as the previous targets were incorrect.
- **BUGFIX** Droplet separation curves from special color .cex files were not applied correctly if the file was created prior to V23.

Color Replacement:

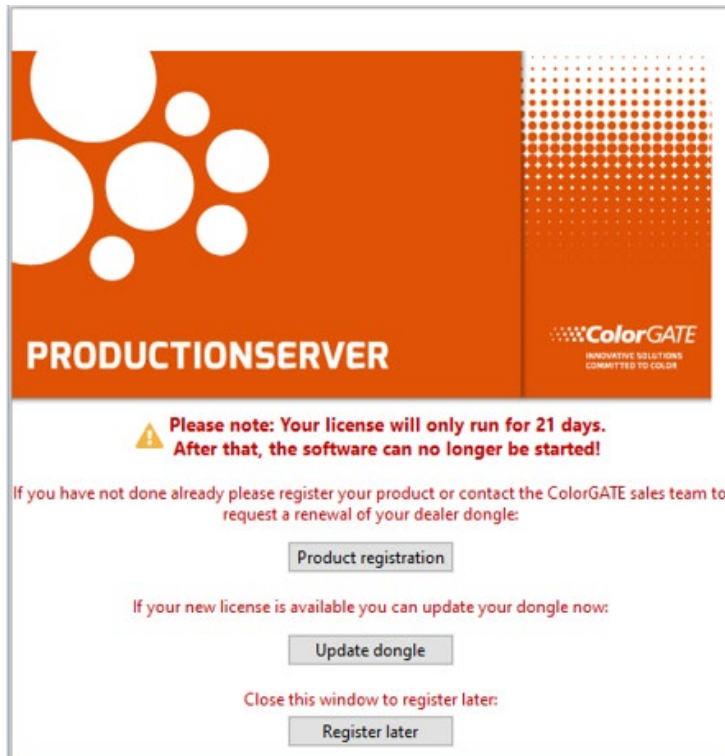
- **BUGFIX** The display of special color channels was not correct if the color replacement with a special color was deactivated.
- **BUGFIX** Color tables that were marked as "deprecated" by PantoneLIVE® were not downloaded.

File Handling:

- **BUGFIX** It was not possible to export a file to the root of a hard disk.

Licensing:

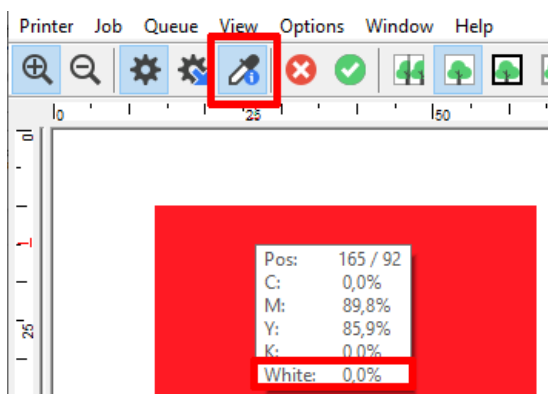
- **NEW** If the software is started with a non-registered or non-activated license, a dialog will appear informing the user about the necessity of a product registration / activation.
This dialog has now been made clearer and more user-friendly: The required steps are described in detail and the user is thus informed about what he must do to be able to use his license without restrictions.



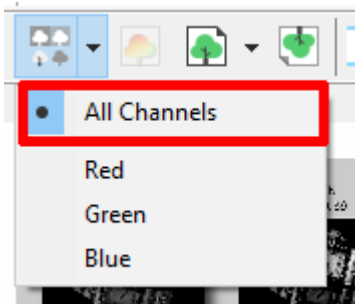
- **NEW** When installing a software update, a note appears now for software-based licenses (SHL-SW) that a valid Value Pack must be present in order to use the software and where the validity of the Value Pack can be checked if required.
- **BUGFIX** The update notification for NFR (Not For Resale) licenses incorrectly referred to the validity of the Value Pack contract.

Preview:

- **NEW** The Color Picker ("Show Color Information") in the advanced preview has been optimized and now also displays special colors.



- **NEW** The channel preview has been extended with an option for none-screen workflows to display all channels side by side (for screen drivers, this option was already available).



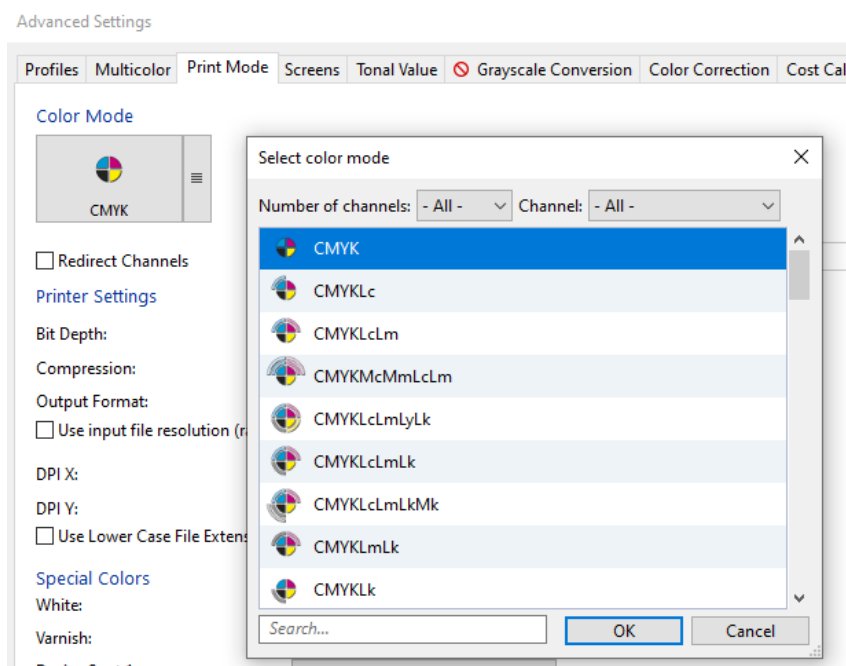
- **NEW** Also channel/separation names are now shown next to the separations.
- **NEW** In screen workflow, single separations can now be displayed in a large preview.

System Backup:

- **BUGFIX** Since version 23, the software sometimes crashed when trying to make a system backup.

User Interface:

- **NEW** The display and selection of color modes on the "Print Mode" tab of the Advanced Settings has been improved and made clearer: If more than five color modes are available, it is now possible to select the desired color mode from a sorted list.



- **NEW** The Ink Splitting preset names and descriptions in the Linearization and Profiling Assistant are now available in different languages.
- **NEW** A warning sign in the printer properties now indicates if an archive folder or a hotfolder does not exist. This makes a misconfiguration or an unmounted network drive clearly visible.
- **NEW** The image for the "About ..." dialog has been updated to look sharper on high-resolution screens.
- **BUGFIX** When the RIP or print process was started for a job, any entries in the columns to the left of the "Status" column were no longer displayed.
- **BUGFIX** Vertical centering did not work with specific settings.

Websupport:

- **BUGFIX** It was not possible to create web tickets directly in the software (via the menu "Help" > "Web tickets") if no specific printer was selected in the license (e.g., before activation or for NFR (Not For Resale) licenses).

3.4 Adobe® PDF Print Engine

Information about this function on the [website](#).



- **NEW** The Adobe PDF Print Engine has been updated to version 6.2. This ensures the highest compatibility with PDF files, especially if they were created with the Adobe Creative Cloud products.

3.5 Color Atlas Module

Information about this module on the [website](#).



- **BUGFIX** When printing the color atlas for a job that had centering enabled, the offset of the job was applied to the color atlas. This could result in the Color Atlas being turned even though it would have fit on the media width.

3.6 Color Correction Loop Module



Information about this module on the [website](#).

- **NEW** The behavior of the Color Correction Loop Module dialogs has been changed to modeless operation. This allows the user to make direct input to the user interface (e.g. pause a queue) even when the dialog is open.
- **BUGFIX** Since version 23, the Color Correction Loop Module could not be controlled correctly via REST. As a result, an empty message box appeared when creating a correction.

3.7 Computer to Screen Module



Information about this function on the [website](#).

- **BUGFIX** When creating a multi-page container, only the first one was displayed in the preview, although several containers were present.
Please note that for existing multi-page containers, the properties dialog or the container editing window must be opened and confirmed with OK to see all containers in the preview.

3.8 Container



Information about this function on the [website](#).

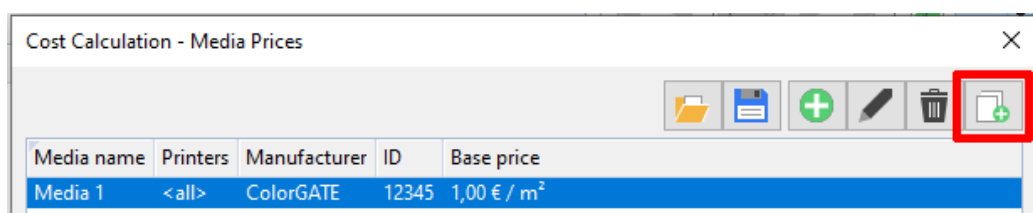
- **BUGFIX** The centering option had no effect when printing a multi-sheet container.
- **BUGFIX** If a job was duplicated within a container, this did not increase the copy count.
- **BUGFIX** Duplicating jobs within a container resulted sometimes in a distorted preview and possibly crashes.
- **BUGFIX** Adding jobs to a container via drag & drop did not work properly.
- **BUGFIX** When a container was sent from one printer to another via the "Send To" function, and the second printer used a different print width than the first one, the media optimized arrangement in the container was not updated.



3.9 Cost Calculation Module

Information about this module on the [website](#).

- **NEW** To simplify the creation of new media and inks, it is now possible to duplicate an existing entry. This can then be slightly modified if necessary and no longer needs to be created completely from scratch.



- **NEW** The number of decimal digits for ink amount values shown in cost calculation dialogs and reports has been increased from two to six. Thus, a very low ink usage value is now also displayed.

3.10 Filmgate / Film and Plate Module

Information about this module on the [website](#).



- **NEW** Only the menu items that are relevant to the Screen workflow are now displayed, making the program clearer.
- **BUGFIX** If a color correction curve for "All channels" was configured in the hotfolder it was not applied to a new job.
- **BUGFIX** MIM's that were created from the Linearization Assistant in Screen workflow were not initialized correctly.
- **BUGFIX** If color management was enabled in the Screen workflow for the hotfolder used, Productionserver crashed after the preview for separated PDFs had been created.
- **BUGFIX** The popup menu to select a single plane in the separation preview was not correctly initialized for jobs with deactivated "Softproof" option.

- **BUGFIX** When at least one plane was disabled, incorrect names of planes were show in the separation preview.

3.11 Fingerprint Module



Information about this module on the [website](#).

- **NEW** It is possible now to control the Fingerprint options via REST.
- **NEW** To prevent errors when printing a Fingerprint Production File, the option "Use embedded profiles" is now enabled whenever a job is created from a Fingerprint Production File, regardless of the settings in the hotfolder. In addition, a warning is displayed on the "Profiles" tab when the "Use embedded profiles" option is deactivated for jobs created from a Fingerprint Production File.

3.12 JDF Interface Module



Information about this module on the [website](#).

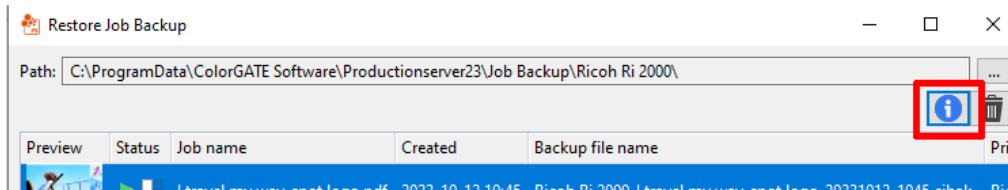
- **BUGFIX** Adding regular image files to a JDF hotfolder via button or drag & drop did not work.

3.13 Job Backup Module



Information about this module on the [website](#).

- **NEW** The REST API now supports the Job Backup Module, so new endpoints for creating and restoring job backups are available.
- **NEW** When creating a backup for multiple jobs, the file name of the backup can now be edited.
- **NEW** When restoring a backup, a new "Info" button can be used to display a window with all contained jobs of the selected backup.



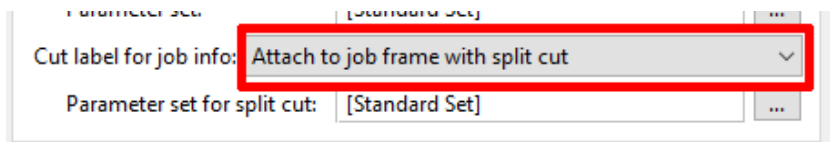
- **NEW** Conflicts such as duplicate job names or different profiles are now shown in a separate window and are arranged more clearly.
- **NEW** If the restore of a job fails, a corresponding message is now displayed.
- **BUGFIX** If a backup was created for several different jobs, only the MIMs and the profiles of one job were stored.
- **BUGFIX** When putting job backups into a hotfolder, the option "Overwrite existing jobs" did not work.

3.14 Print and Cut Module

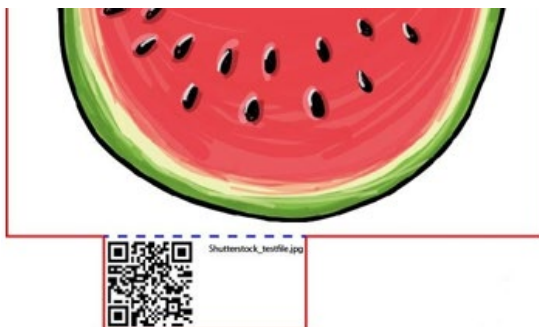


Information about this module on the [website](#).

- **NEW** The cut label function has been enhanced with an option that attaches the label to the job frame with an additional cut path between job and label.



In this way it is possible, for example, to add a perforation between the job and the label so that the label is kept with the job but at the same time it can be cut off very easily.



ColorGATE CutServer:

- **BUGFIX** In the preview, the cut path was partially not displayed.

ESKO i-cut Production Console:

- **BUGFIX** The cut preview was not created correctly for multi-page containers.

GCC Puma III/Jaguar IV / GCC Puma IV/Jaguar V:

- **NEW** For .plt files, decimal places are now no longer specified since they are not relevant for cutting.

IECHO-SK / Jingwei-SK:

- **NEW** The drivers are able now to generate a QR code while printing a file.

MultiCam:

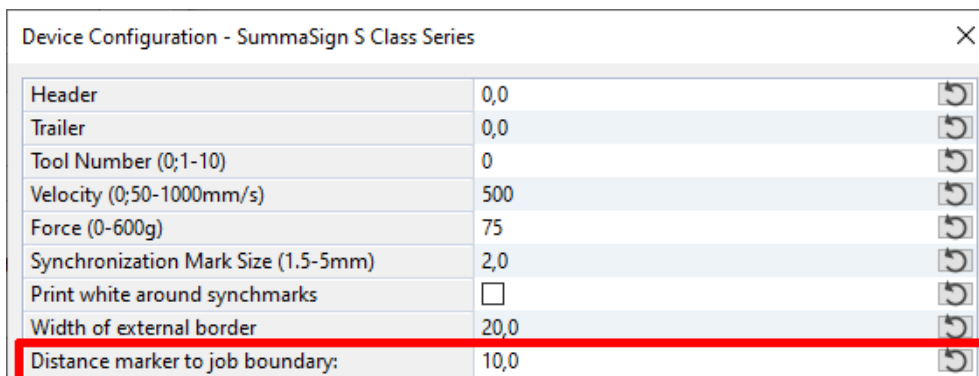
- **BUGFIX** The maximum segment length was not applied correctly. The additional marks were missing in the cut files.

Mutoh (Ultima, SC-Pro, Kona) / Primera FX Series:

- **NEW** For .plt files, decimal places are now no longer specified since they are not relevant for cutting.

Summa (S/S2 Class, SummaSign, SummaCut):

- **NEW** For .plt files, decimal places are now no longer specified since they are not relevant for cutting.
- **NEW** Since version 23, the cutter sometimes recognized a motif as OPOS XY line as the distance between motif and line was too small. Now, there is a new option to set the distance between the mark and the job.



- **BUGFIX** Under certain circumstances, the barcode was printed although this option was not enabled.

Trotec:

- **NEW** For .plt files, decimal places are now no longer specified since they are not relevant for cutting.

3.15 Profiler Module / Linearization Assistant



Information about the Profiler Module [here](#) on the website.

Information about the Linearization Assistant [here](#).

- **BUGFIX** When creating a XCLR profile, incorrect color icons were displayed on the "Full Color Graphs" tab.
- **BUGFIX** If a .ccx file is opened and the MIM is not found, the .ccx file is now opened read-only. This way it can no longer be saved to avoid writing back incomplete data.
- **BUGFIX** When duplicating a MIM from the Linearization and Profiling Assistant, the simulation profile was removed from the settings.
- **BUGFIX** If a MIM was renamed, the MIM name in the .ccx file was not updated. This resulted in an error message about a missing MIM when opening the .ccx file.
- **BUGFIX** Updating of hotfolder and job MIM names did not work if a MIM was renamed twice.
- **BUGFIX** When creating a MIM via the Linearization and Profiling Assistant, it was not possible to select the workflow.
- **BUGFIX** When importing data for profiling targets on some color modes, e.g., CMYKROGV, a wrong channel was used for the reference values and an error message appeared.
- **BUGFIX** It was not possible to import color transfer curves (.cctx files).
- **BUGFIX** When exporting measurement data for some color modes, e.g., CMYKRO, a wrong channel order was used for the reference values.

Konica Minolta FD-9:

- **BUGFIX** It was not possible to enter more than two digits for the IP address in the device settings dialog.

TECHKON SpectroDens:

- **BUGFIX** The transfer of measured values between the measuring device and the software did not work reliably. Now the driver checks whether the correct number of patches is transferred during a strip measurement. If this is not the case, the measurement of the row can be repeated.

X-Rite i1iO for i1Pro3 & i1Pro3 Plus:

- **BUGFIX** If a measurement chart was measured rotated by 180°, the results were inverted.

X-Rite i1Pro3:

- **BUGFIX** In version 23 the category of the measurement device has been changed and is now Cat 0. If a previous version is used with a V23 license, the driver should be available with this version, even if it was not part of the old license. This now also works with software based licenses.

3.16 REST API Module



Information about this module on the [website](#).

- **NEW** It is possible now to control the Fingerprint options via REST.
- **NEW** The REST API now supports the Job Backup Module, so new endpoints for creating and restoring job backups are available.
- **NEW** The new endpoint 7.14. allows to retrieve the target previews as displayed in the user interface.
- **NEW** Corrupt files that can cause the program to crash are now automatically removed when the REST server is running.
- **NEW** It is now allowed to send empty strings to clear settings like "freeInfo" in the job settings.
- **BUGFIX** Since version 23, the Color Correction Loop Module could not be controlled correctly via REST. As a result, an empty message box appeared when creating a correction.
- **BUGFIX** A PrintFinished notification was sometimes not sent if the job was automatically deleted.

- **BUGFIX** Some PrintFinished notifications were missing when printing multiple jobs.
- **BUGFIX** The workflow settings were inconsistent. To fix this, the new options “DeleteJobAfter1Week”, “DeleteJobAfter2Weeks” and “DeleteJobAfter4Weeks” have been added for the parameter "afterPrint".
- **BUGFIX** Getting the setting "Workflow" > "AutoPrint" reported the setting "AutoRip".
- **BUGFIX** When retrieving the job settings, the values for width and height were swapped if the job was rotated. Now, the values always contain the original job size as in the user interface.
- **BUGFIX** Changing the "fixedSize" option for containers did not work properly.
- **BUGFIX** The "Copies" field in the job list reported a wrong value for container jobs.
- **BUGFIX** If a multicopy job should be added to an existing container, only a single copy was added.
- **BUGFIX** The option "useMediaSize" has been added for containers.
- **BUGFIX** Setting an output directory now also works with containers.
- **BUGFIX** When printing a container job, the output files were not added to the files endpoint and the system log did not contain the "PrintPageFinished" notification.
- **BUGFIX** Splitting a container led to a crash of the software if a job had a copyCount > 1.
- **BUGFIX** It was not possible to remove a job if it had a copyCount > 1.
- **BUGFIX** If the media height was changed, it was set to 0 and the “Rollfeed” option was activated.
- **BUGFIX** The MIM administration was not updated correctly after a MIM import.
- **BUGFIX** It is now possible to send a color replacement with special colors.
- **BUGFIX** Setting the resolution via REST had no effect.
- **BUGFIX** After aborting a rip or a print process of a job, it was not possible to restart ripping or printing.
- **BUGFIX** If "Dynamic" was selected as media size, the control wedge was printed on the print motif.
- **BUGFIX** Printing a static target file failed with a "File not found" message.

3.17 TVI Calibration Module



Information about this function on the [website](#).

- **NEW** Process calibration targets for the following devices have been added: Barbieri Spectro LFP, X-Rite i1Pro3 Plus and X-Rite i1iO for i1Pro3 Plus.

3.18 Printer related

aeoon Maikuro:

- **BUGFIX** The bit depth settings have been corrected from 2 bit to 4 bit.

Atexco Model X:

- **BUGFIX** In version 23, it was not possible to print certain container jobs.

Brother GTX-422:

- **BUGFIX** The file extensions of the output files have been adjusted and now depend on the printer model (.arx4, .arx6, .arxp).
- **BUGFIX** Files created with Productionserver can now be opened in Brother's FileViewer. In addition, jobs generated in Productionserver have the prefix "CG:" in their name and can thus be identified more easily in FileViewer.

Brother GTX-600:

- **BUGFIX** The file extensions of the output files have been adjusted and now depend on the printer model (.arx4, .arx6, .arxp).

Brother GTXpro:

- **BUGFIX** Automatic printing of W + C in single print head pass did not work properly.
- **BUGFIX** The file extensions of the output files have been adjusted and now depend on the printer model (.arx4, .arx6, .arxp).
- **BUGFIX** Under some circumstances, the preview was not shown on the printer panel and on the GTX file viewer tool.
- **BUGFIX** Files created with Productionserver can now be opened in Brother's FileViewer. In addition, jobs generated in Productionserver have the prefix "CG:" in their name and can thus be identified more easily in FileViewer.

Epson printer drivers:

- **BUGFIX** Outdated error messages and other texts have been corrected and updated.

Epson SureColor SC-P20000:

- **BUGFIX** When printing in RGB-HTM mode, the output was nearly black since V23.

Epson SureColor SC-P65X0 (D/DM/DL) Series / SC-P85X0 Series / SC-T37X0 (D/DL/DM) Series / SC-T57X0 Series / SC-T77X0 Series:

- **BUGFIX** Borderless printing did not work when "Paper source" was set to "Roll (auto select)".
- **BUGFIX** The check whether the set width is valid for borderless (full bleed) printing did not take place if "User defined" was selected as "Media Size".

Guangzhou PuLisi Technology Co PuLisi-H:

- **NEW** The color mode CMYKOGV is now available.
- **NEW** A preview file can now be configured for path output and can be generated as .bmp file.

Guangzhou PuLisi Technology Co PuLisi-R:

- **NEW** The width limitation has been removed.
- **NEW** The "Rollfeed" option has been removed.
- **NEW** The height limitation has been set to 1310mm.
- **BUGFIX** Changes to the supported color modes were not applied and were thus not available in the existing .cos files.

GUNSJET KGT Label 510:

- **BUGFIX** When a job was to be printed with a 2 bit and 1200x1200dpi print mode, it was cancelled with an error message.

Kornit Atlas MAX Poly:

- **NEW** Following print modes have been updated:
 - Cotton STD Neon has been removed.
 - Cotton HQ, Cotton UHQ, Cotton Light HQ, MaxPoly Cotton Light CMYK and MaxPoly Cotton Dark CMYK have been added.
 - Cotton JIS (formerly Cotton Neon JIS) and Cotton Light STD (formerly Cotton Light Neon) have been renamed.

Mimaki CJV330 / JV330:

- **NEW** The driver now has the options "Vacuum power", "Top blower strength" and "Media feed speed".

Mimaki JFX-200-2513 EX:

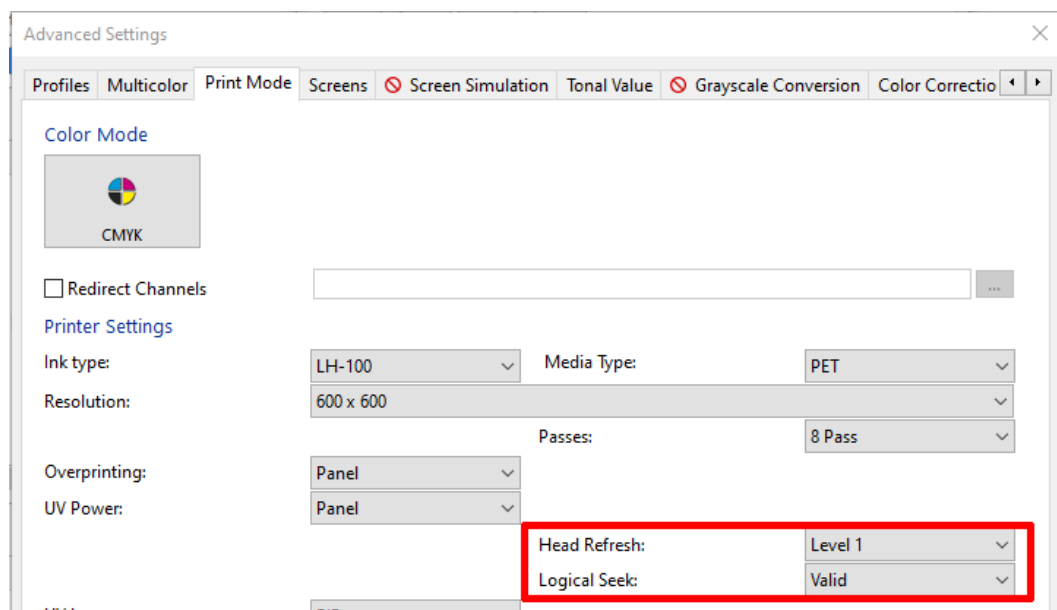
- **BUGFIX** In version 23, error command 201 was displayed when printing white and color in one pass.

Mimaki TxF150-75:

- **NEW** The temperature limits for preheater, printhead and postheater have been changed from (0 - 60) to (0 - 50).

Mimaki UJF3042 MKII e / UJF6042 MKII e:

- **NEW** Two new options "Head Refresh" and "Logical Seek" are now available.



- **BUGFIX** White ink overprinting was not working.
- **BUGFIX** When printing White > Color, the printing process was not completed.

Mimaki UJF7151 plus II:

- **NEW** The ink set "WW+6Color (LcLmMCMYK)" has been added.
- **BUGFIX** When printing White > Color, the printing process was not completed.
- **BUGFIX** The layer combination White > Color >Varnish was missing.

Mutoh ValueJet-628MP:

- **NEW** The color modes CMYKLCLMLK and CMYKOGB have been added.

Océ Colorado 1630 / Colorado 1640 / Colorado 1650:

- **NEW** Horizontal offset is no longer handled in the ColorGATE software. This enables the printer to automatically place synchronization marks as close to the job as possible.

Ricoh Pro L5160 / Pro L5160e:

- **BUGFIX** Some ink droplet sizes used for the ink usage calculation have been corrected.

Roland BN-20:

- **BUGFIX** Since V23.01, it was not possible to print and an access violation appeared.

Roland LEC-540:

- **BUGFIX** When a vertical offset should be printed and a cutter was activated before the "Rollfeed" option was unchecked, no vertical offset was printed. Now, the cutting is set off when the "Rollfeed" option is deactivated.

Roland VG3-540 / VG3-640:

- **BUGFIX** The label for the media type was missing on the "Print Mode" tab.
- **BUGFIX** The heater and the dryer temperature was missing on the "Print Mode" tab.
- **BUGFIX** The option "Special ink set" was shown for ink channel setups that cannot include special inks.
- **BUGFIX** The "Combine layers" option was shown even when no special inks were active or available.
- **BUGFIX** The value "User defined" for "Head height" has been replaced with "Panel".

Roland VS-300i:

- **BUGFIX** Since V23.01, the connection to the printer could not be established.

SignMaker SM EP184CL-U:

- **NEW** The driver now has the option "Print Special Colors only" on the "Print Mode" tab.

A list of all printer drivers supported by ColorGATE can be found on our [website](#).